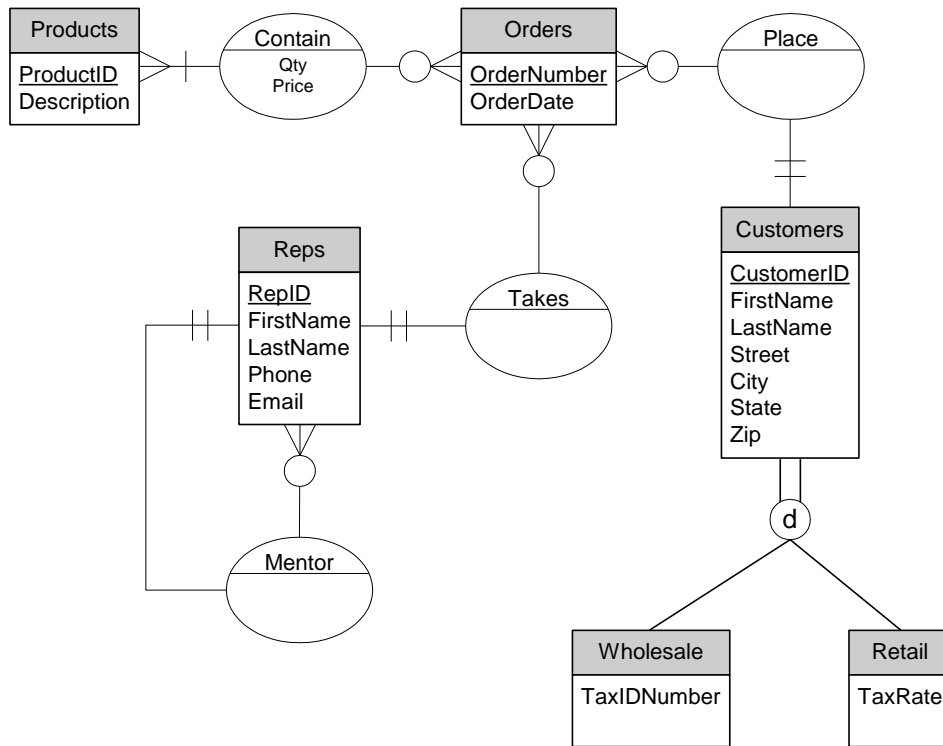


MIS 385/MBA 664
HOMEWORK ASSIGNMENT 3
 See syllabus for due date and point value.

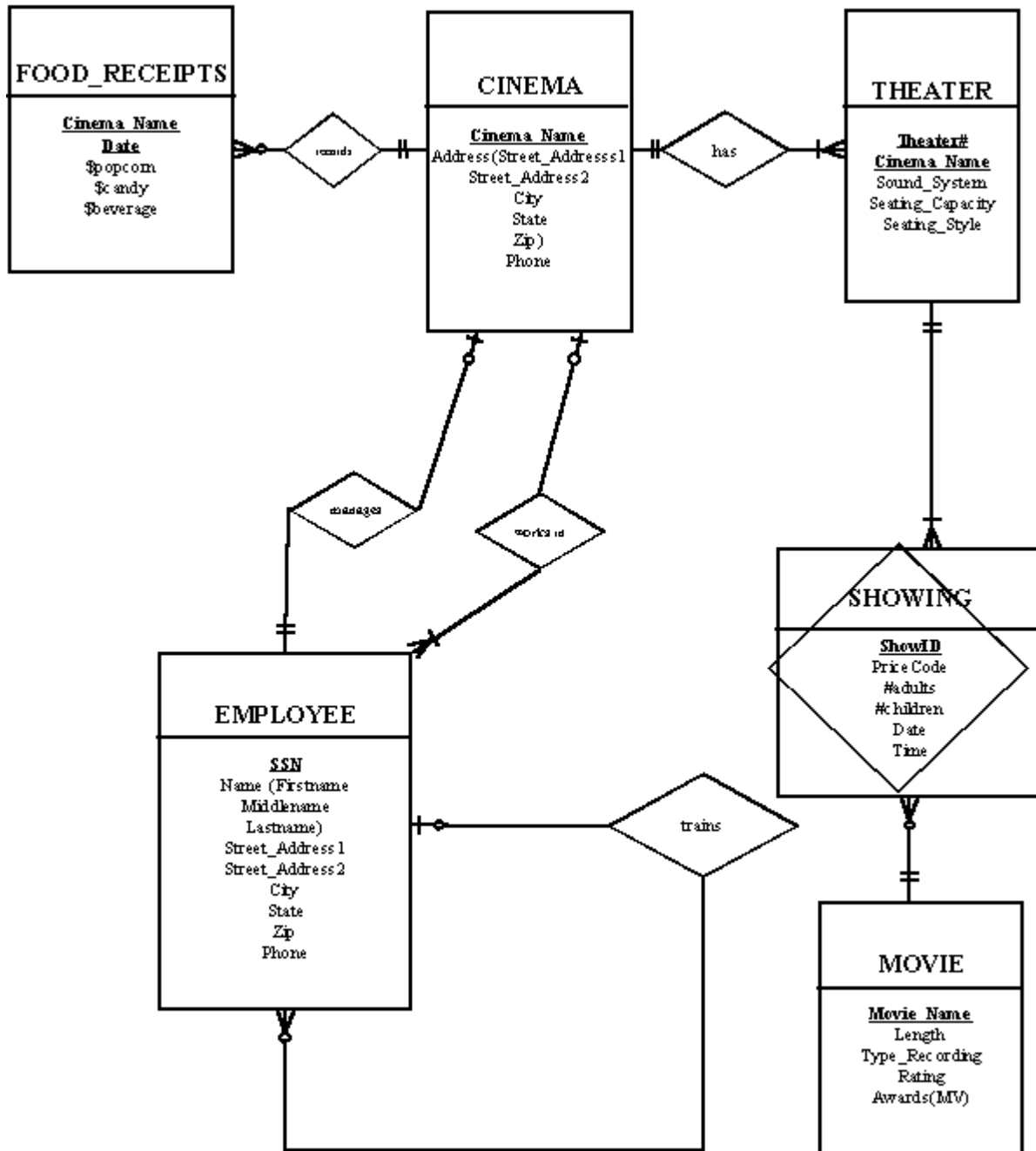
1 – ER to logical schema mapping

Instructions: Map the ER diagram below into a logical schema where all relations are in 3NF. Use the relational schema notation and be sure to indicate all primary keys, foreign keys and referential integrity constraints. The ER notation is slightly different (circles instead of diamonds, attributes listed within entities and relationships), but this shouldn't be a problem.

A)

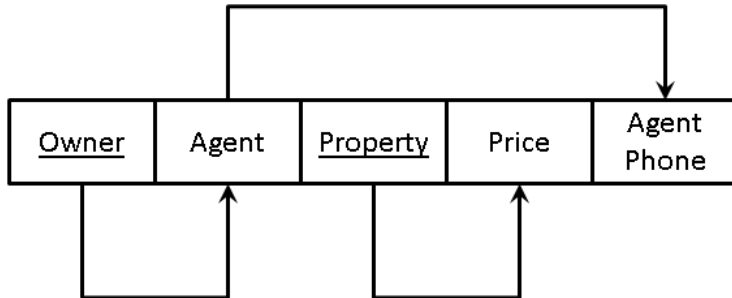


B)



2 – Normalization

A) Normalize the following relation to 3NF. Remember to include a primary key for each relation, and identify any foreign keys.



B)

Place the following into a relational schema into 3NF. Remember to include a primary key for each relation and identify functional dependencies and any foreign keys.

Note: all data that is tracked in the database (or not a calculated field) is in **BOLD** on the below form.

Joe's Trinkets and Things				
Sales Order Form				
Order No: 33				Date: 2/2/02
Customer: Jimmy Neutron				
Address: 55 Moon Rocket Place				
City: Pleasantville		State: GA	Zip: 32212	
Email: tothemoon@flyme.com				
Salesperson: Mojo		Phone#: 514-821-0984		
Qty	Product No	Product Description	Unit Price	Total product price
2	T-123	Jelly Eyeballs	\$1.29	\$ 2.58
1	T-009	Sticky Tongues	\$2.99	\$ 2.99
40	H-908	Snake Hair Strands	\$0.25	\$10.00
			Subtotal	\$15.57
			Tax	<u>\$ 1.09</u>
			Total	\$16.66